

# **SALMON ECOLOGY**

Maria Morlin, Zoology, UBC

Fisheries Centre



- 1. Kinds of salmon**
- 2. What they eat**
- 3. What eats them**
- 4. Habitat**

## Species of Pacific Salmon

- ❖ Pink
- ❖ Coho
- ❖ Sockeye
- ❖ Chinook
- ❖ Chum



### Coho life history

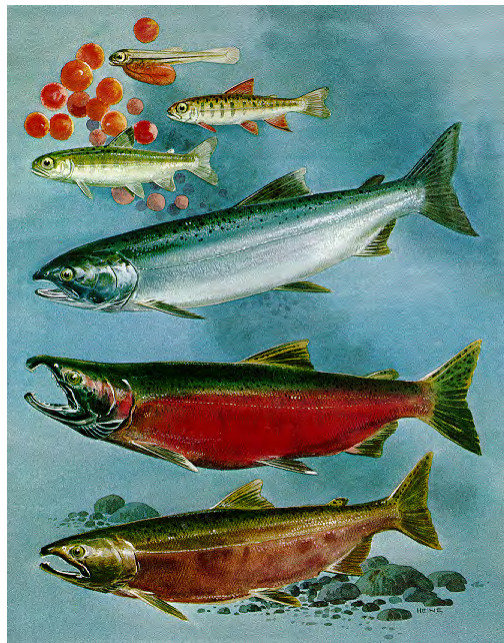
Eggs hatch in spring

Young are called alevins

Rear in streams ~1yr –  
called parr or fry,  
and then migrate as  
smolts

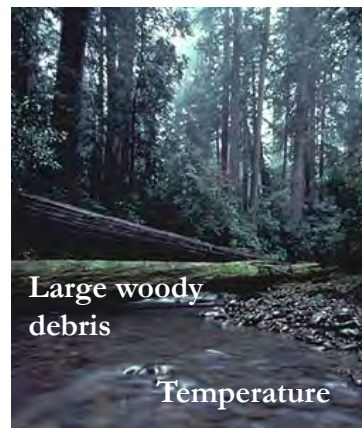
They spend 18 months  
at sea where they feed  
and grow

Spawn in the fall

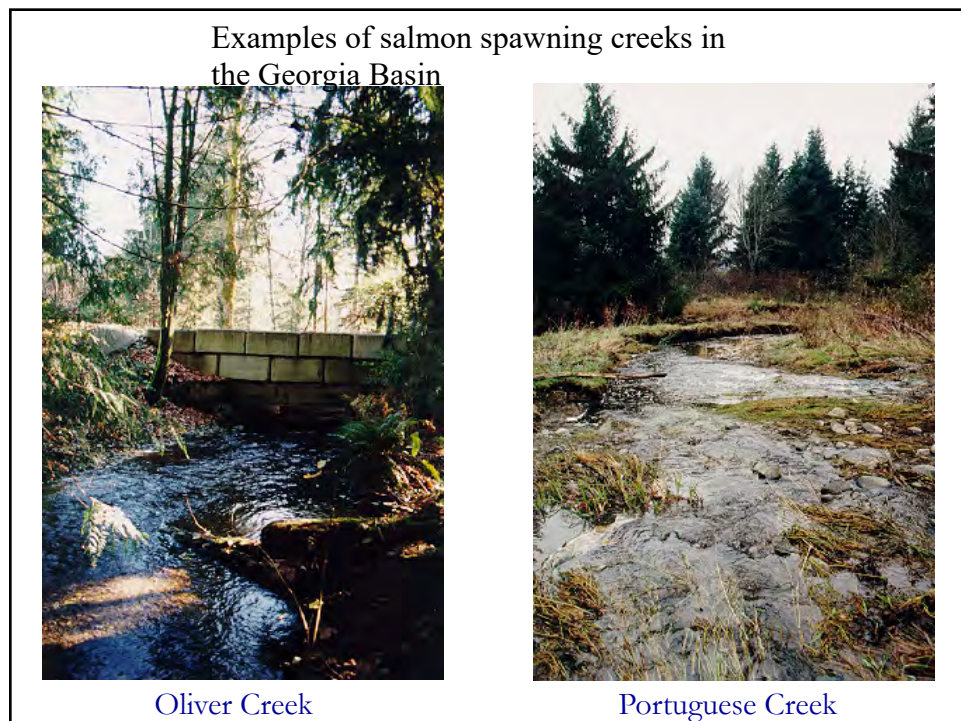
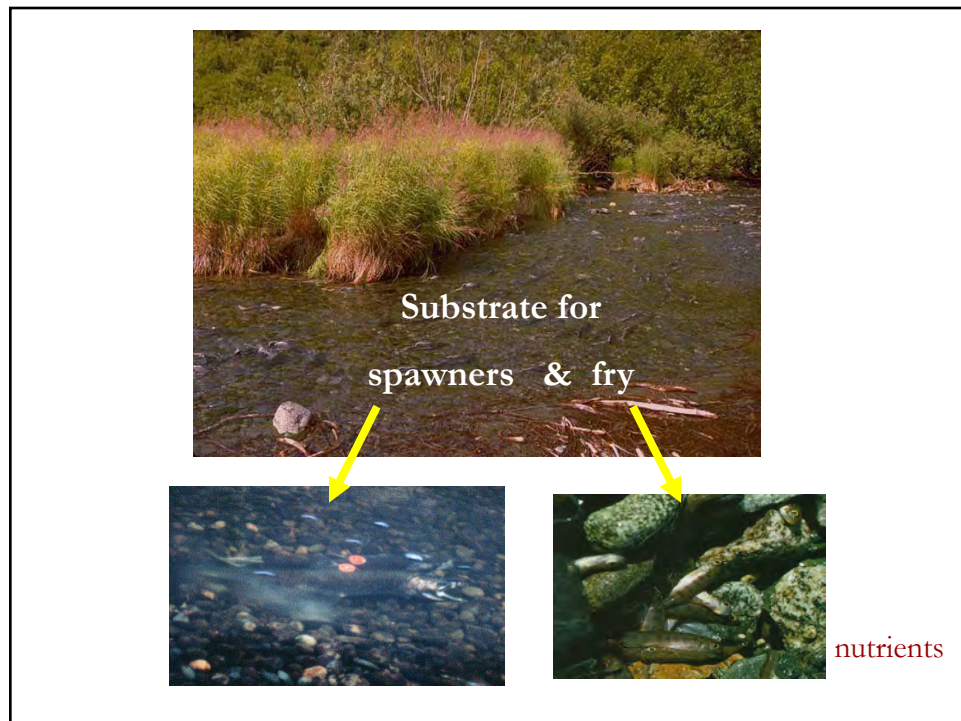


## Spawning

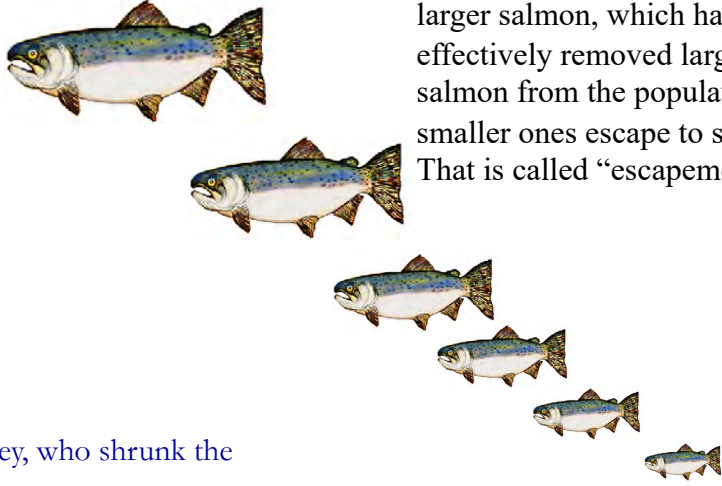
- Salmon, after migrating 1000's of km to sea to feed and grow large, return to the exact stream they were born in. Even to the exact location in the stream.
- Lots migrate up the Fraser River to find their natal streams.



This is the kind of habitat salmon require to spawn (mate and lay eggs)




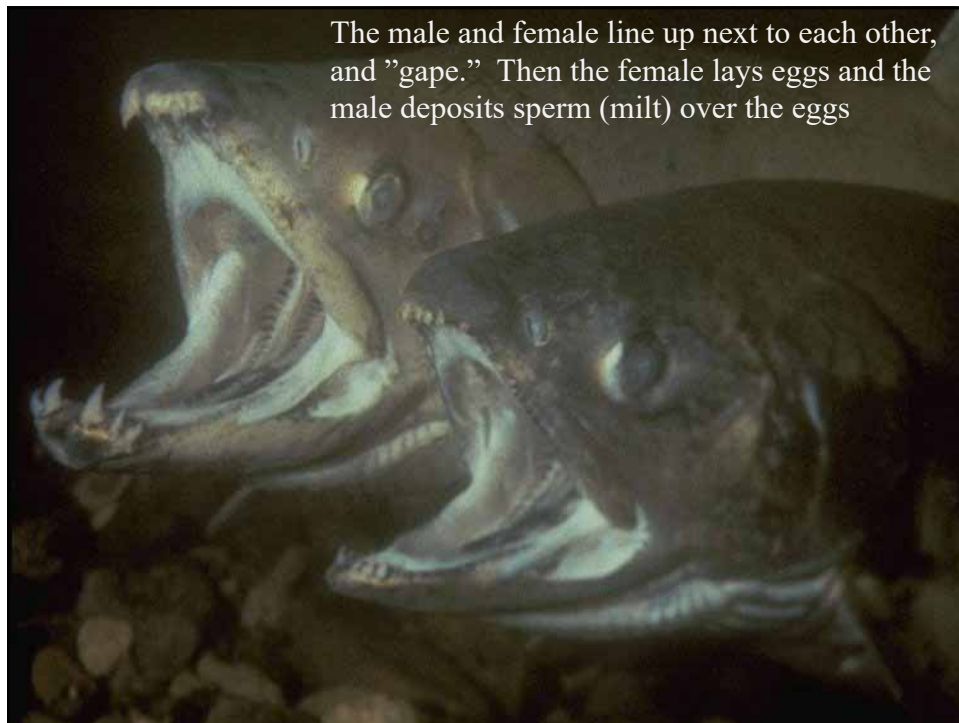
Salmon average sizes have shrunk, due to fishing for the larger salmon, which has effectively removed larger salmon from the population. The smaller ones escape to spawn. That is called “escapement”



Hey, who shrunk the salmon?

Salmon predators – Grizzly and Black bears





## Purpose of my study (another lecture)

- To investigate the relationship between coho abundance and land use



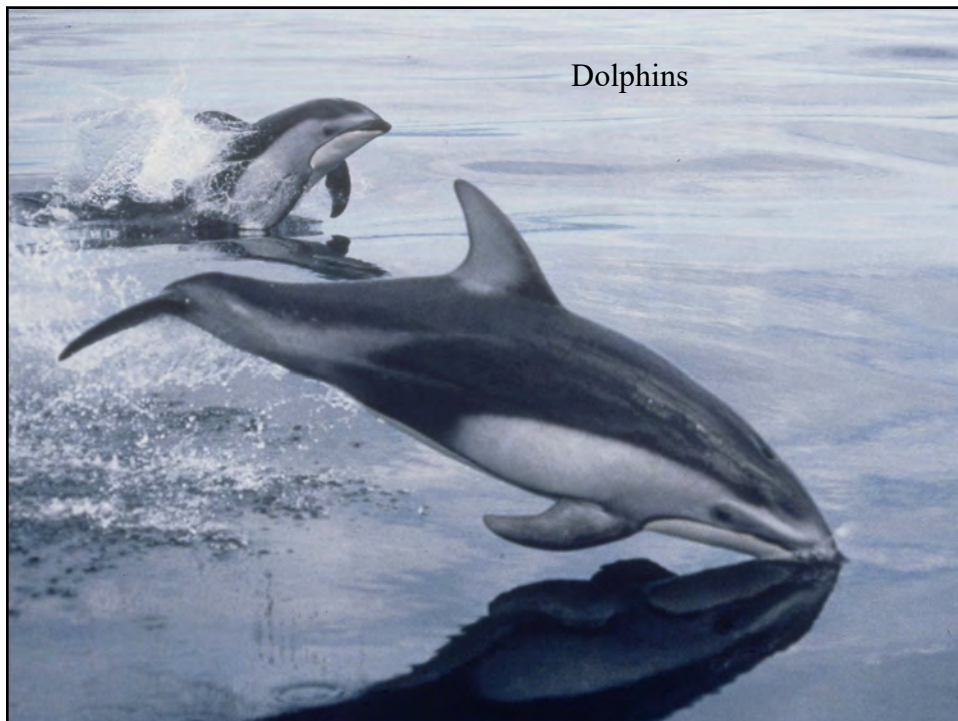
vs.





More predators:

Seals



Dolphins

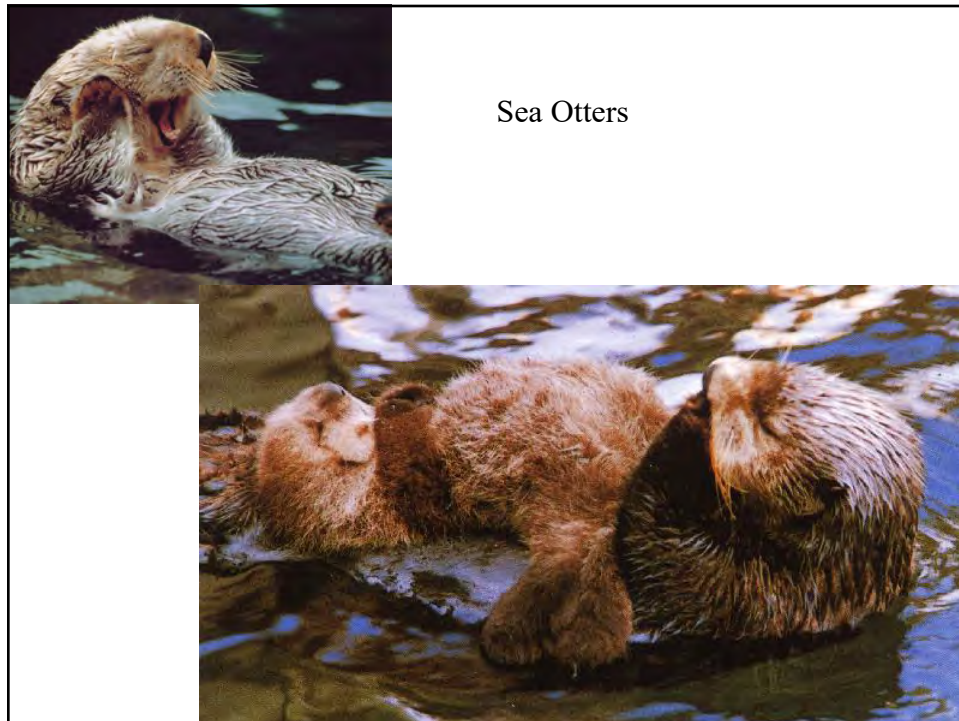


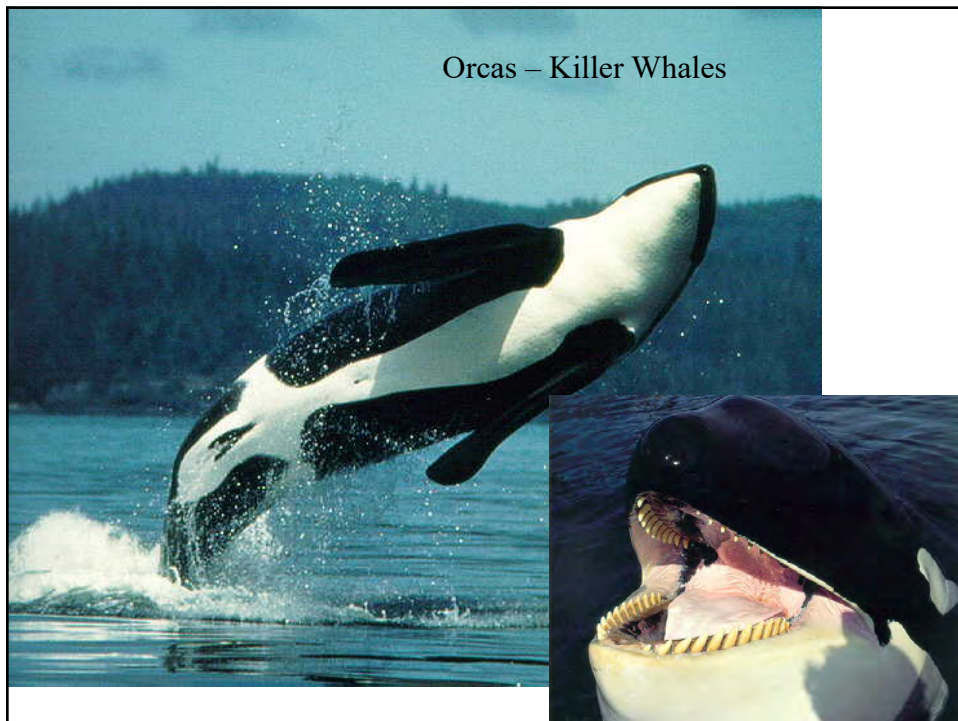


PHOTO BY ROSS DUNN

The bald eagle



PHOTO BY ROSS DUNN



Orcas – Killer Whales





Coho are called: *Onchorhynchus kisutch*. The genus name for salmon *Onchorhynchus*, means “hooked mouth”



Salmon are an important indigenous staple. Here is a fisher using a net, and salmon being dried.



*Onchorhynchus kisutch*



Chinook salmon have more spots







Salmon prey: herring



A researcher, looking at marine habitat



Pink Salmon. Also called “humpies”



A test  
fishery







A very large rainbow trout.

Cutthroat Trout



